



MONTHLY MEMBERSHIP PROGRESS REPORT

District 2 T1

Results as of: 01/31/2019

GMT: GREGORY GILLIAM

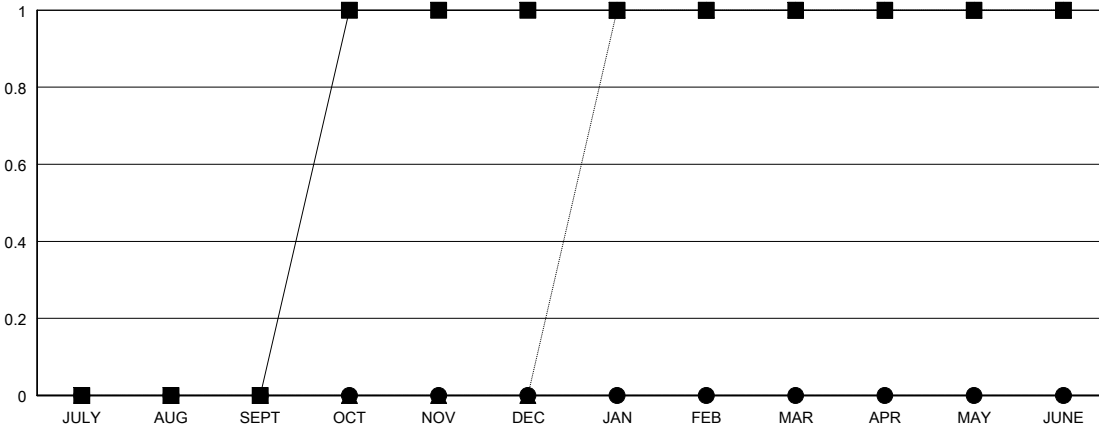
LOCATION TEXAS

GMT CA

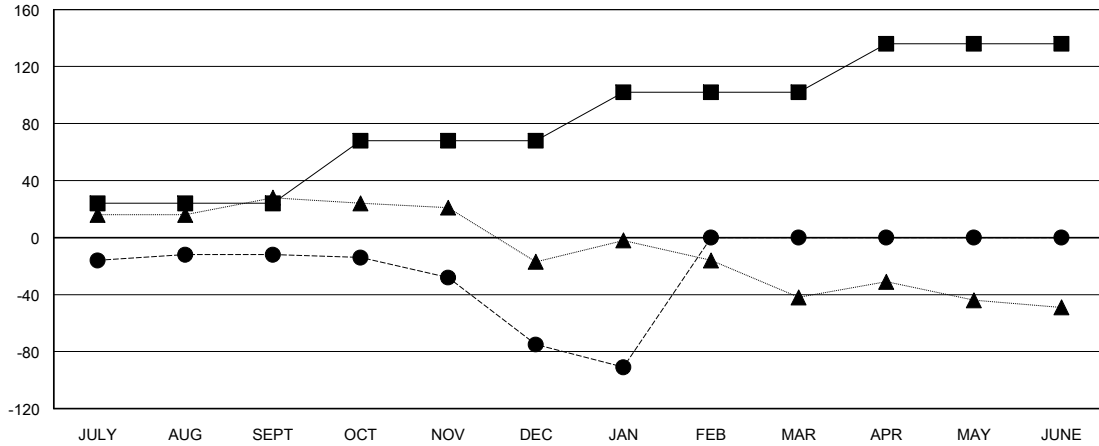
Clubs			
RESULTS FOR 2018-2019			
QUARTER	NEW CLUB GOAL	NEW CLUBS	DROPPED CLUBS
JULY/AUG/SEPT	0	0	1
OCT/NOV/DEC	1	0	2
JAN/FEB/MAR	0	0	0
APR/MAY/JUNE	0	0	0

Members			
RESULTS FOR 2018-2019			
QUARTER	MEMBER GROWTH NET GOAL	MEMBER GROWTH ACTUAL	DROPPED MEMBERS ACTUAL (including transfers)
JULY/AUG/SEPT	24	42	50
OCT/NOV/DEC	44	36	95
JAN/FEB/MAR	34	5	21
APR/MAY/JUNE	34	0	0

GOALS AND ACTUAL NEW CLUBS CUMULATIVE



GOALS AND ACTUAL MEMBERS CUMULATIVE



DROPPED CLUBS: 3

19 CLUBS OF 38 ADDED 1 OR MORE NEW MEMBERS
--

GENDER DISTRIBUTION	
MALE	804 (69.73%)
FEMALE	349 (30.27%)
Women Percentage Fiscal Year Goal: 40%	

DROPPED MEMBERS	
DECEASED	9
CLUB CANCELLED	32
OTHER	125
TOTAL	166

[CLICK HERE FOR CUMULATIVE MEMBERSHIP DATA](#)

TOTAL FAMILY UNIT MEMBERS	128
FAMILY MEMBERS PAYING HALF DUES	64